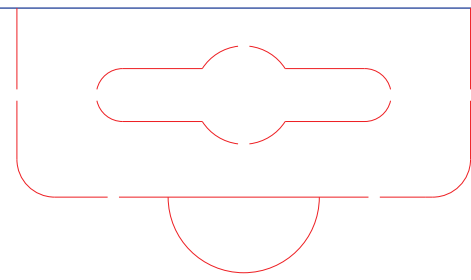
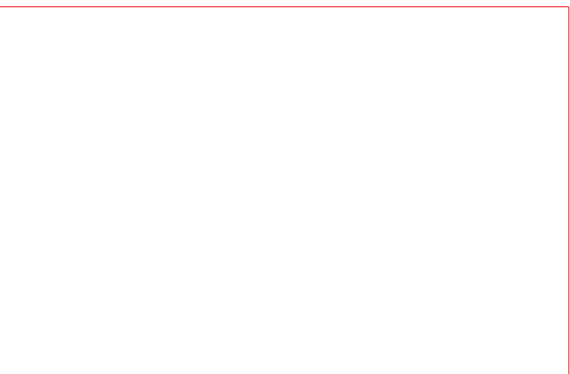
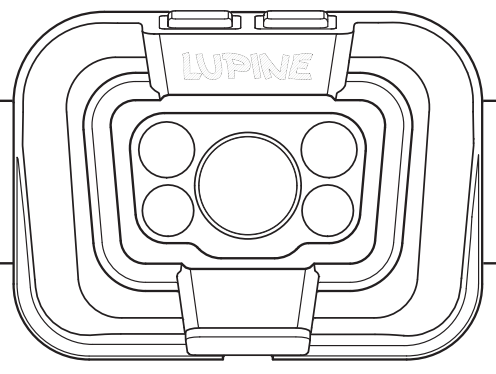


288.25

239.5

120



LUPINE

PENTA


UP TO 1000 LUMENS
3x WHITE, 2x RED LEDs
DIFFUSE, MID, NARROW BEAM
CONSTANT AND FLASH MODE
BOOSTMODE


MODULAR
DISMOUNTABLE
DESIGN


QUICK CHARGING
WITH USB C
LI-PO BATTERY


COLD RESISTANT


STRONG ALUMINIUM
HOUSING, WATERPROOF IP68


RUNTIME
MINIMAL: 1H
MAXIMAL: 120H



DETAILS & BEAM PICTURES

Lupine lighting systems GmbH, Im Zwiesel 9, D-92318 Neumarkt, Germany; www.lupine.de
WEEE-Reg.-No.: DE38409963; BattG-Reg.-No.: 21005699
EC Declaration of Conformity: www.lupine.de/ce/



0755
Penta 4500K



4 260262 591456

44.25

92

45

92

15